



Geoportal.de –
More
knowledge





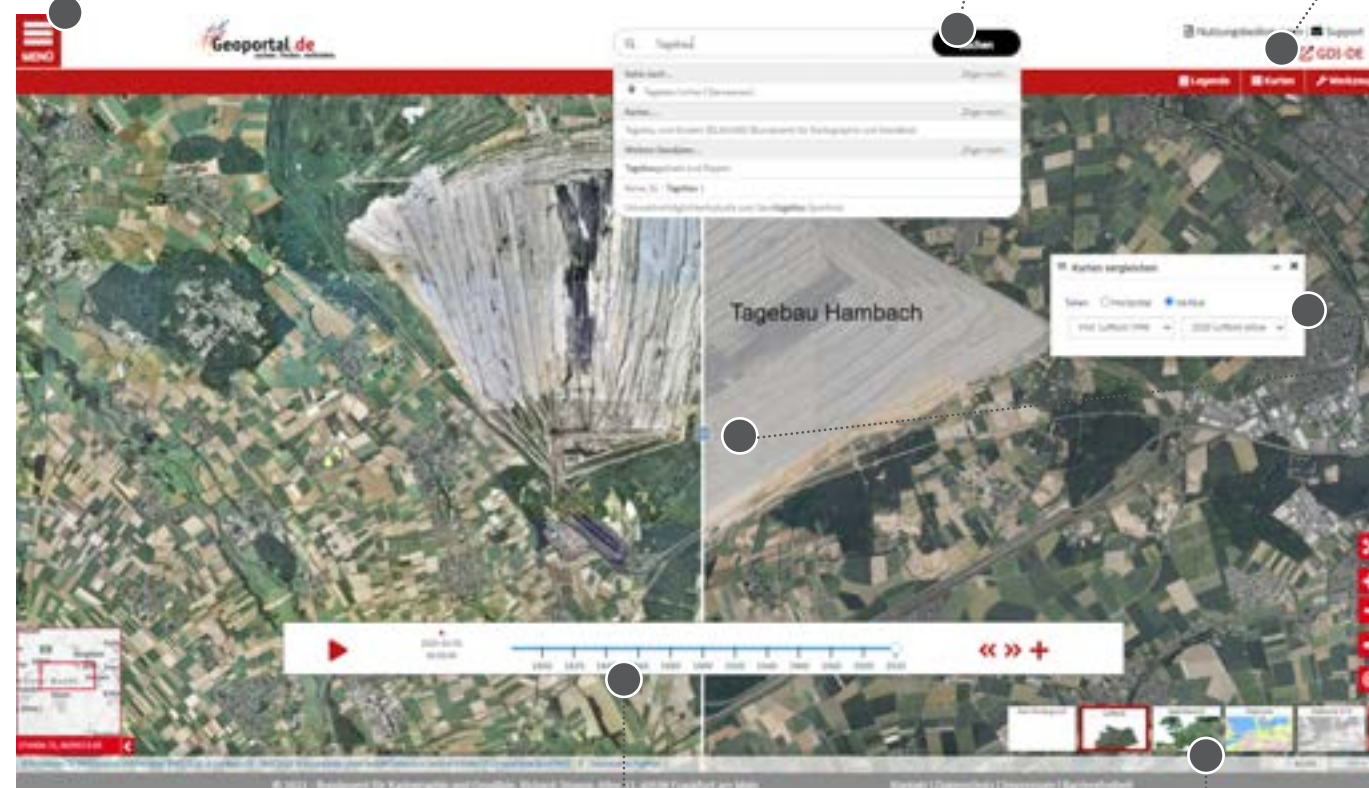
Find spatial data information fast and simple!

- Wide Variety
- Easily accessible
- Vividly presented
- Reliable sources

Do you have questions that start with „where,, and are looking for spatial data such as nature conservation areas, satellite imagery, topographic overview maps, cadastral data?

Then Geoportal.de is the right place for you! The Geoportal.de offers a large selection of freely accessible spatial data from the most diverse areas of public administration, from the Federal Office to the town hall. The variety of available data ranges from weather-, climate-, environmental- or traffic data to location- and navigation data, which are particularly interesting for business and society, to statistical data, which are often used in science and administration.

In a large-scale project, the Federal Agency for Cartography and Geodesy (BKG) and the Spatial Data Infrastructure (SDI) optimised the Geoportal.de. The aim was to make the portal as easy to use as possible in order to facilitate research and the use of data for citizens as well as decision-makers from politics, science and industry. To achieve this, the user experience of the Geoportal.de was significantly improved, to support mobile devices natively, and simplify navigation.



Main menu

Access to selected thematic maps and other important information is possible at any time via the main menu.

Search

The search function can be used to find (spatial) data from public administrations (fast and simple).

Maps

Different maps can be combined with each other. Each maps (layers) transparency can be controlled individually.

Tools

A range of tools is available to interact with the maps/layers, such as printing, drawing and measuring.

Comparison of maps

A selection tool and the interactive slider allow easy visual comparison of two maps.

Navigation

Interactive map navigation. In addition, the map excerpt can be shared via Twitter, e-mail, and link.

Timeline slider

The timeline slider allows for the creation of animations over time.

Background map

Attractive topographic web maps, aerial photographs or satellite maps can be selected as backgrounds.

The Geoportal.de opens up a view of the contents of the Spatial Data Infrastructure Germany (GDI-DE)

Geoportal.de is part of the **Spatial Data Infrastructure Germany (GDI-DE)**, an initiative of the Federal Government, the States and local authorities. As a geoportal for all of Germany, it is an important tool for coordinating the participants in the GDI-DE network. It helps to implement the service-based architecture of the GDI-DE.

In practice, this means publishing data and services interoperably and making them usable.

Geoportal.de primarily serves experts from administration, science and industry, but also interested citizens.

Geoportal.de is a public and free-of-charge web service and an active contribution by Germany to an open knowledge and information society.



Coordination Office
Spatial Data Infrastructure (SDI) Germany
Federal Agency for Cartography and Geodesy
Richard-Strauss-Allee 11
60598 Frankfurt am Main
Phone: 069 6333-258
Telefax: 069 6333-441
E-Mail: mail@gdi-de.org
www.gdi-de.org
<https://wiki.gdi-de.org>
www.twitter.com/gdi_de

Publisher, concept and editing: Koordinierungsstelle GDI-DE, Bundesamt für Kartographie und Geodäsie | 2021

Pictures by: Bundesanstalt für Gewässerkunde, Bundesanstalt für Landwirtschaft und Ernährung (BLE), Europäische Union (Copernicus Sentinel-2 Daten), Bundesamt für Kartographie und Geodäsie, Deutscher Wetterdienst, GovData.



Federal Agency for Cartography and Geodesy
Richard-Strauss-Allee 11
60598 Frankfurt am Main
Phone: 069 6333-1
Telefax: 069 6333-235
E-Mail: mailbox@bkg.bund.de
www.bkg.bund.de
www.twitter.com/BKG_Bund

www.geoportal.de

Service centre
Phone: 0341 5634-333
Telefax: 0341 5634-415
E-Mail: dlz@bkg.bund.de

